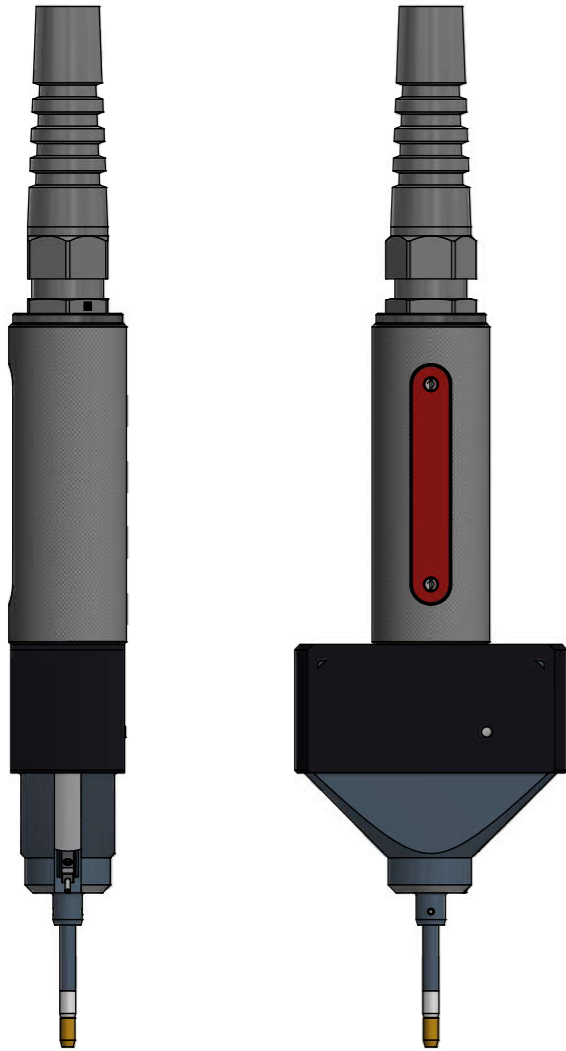


Ventilsitzmesstechnik AT1300

Valve seat metrology

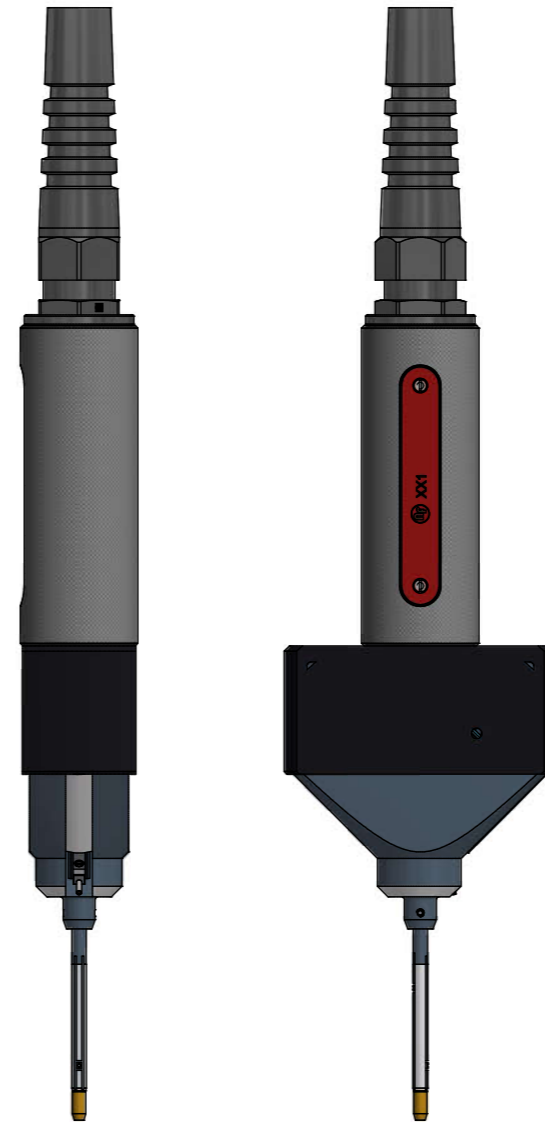
AT1340.A / B / C
Messung Ventilsitz-Geradheit & Breite
measure valve seat straightness & width



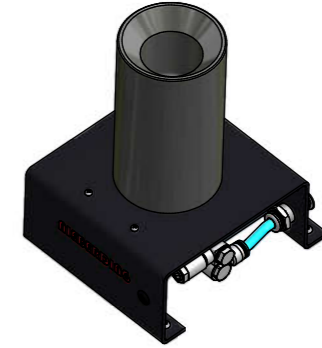
Depot mit Messluftabschaltung
NF 16-41.10
Depot with measuring air shutdown



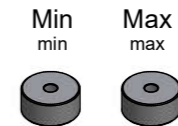
AT1342.A / B / C
Messung Geradheit, 1/2 Winkel & Breite
measure straightness, 1/2 angle & width



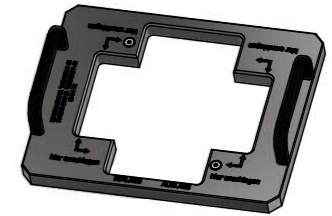
Depot mit Messluftabschaltung
NF 16-41.10
Depot with measuring air shutdown



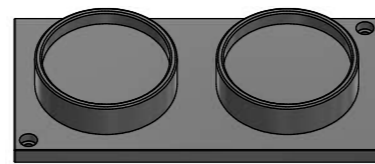
Einstellringe
setting rings



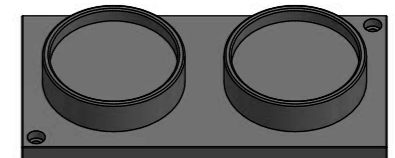
Führungsplatte
guide plate



AT1305.AB1
Standard ohne Beschriftungsschild
Parking for setting master
Standard without inscription label



AT1305.AB1
Standard ohne Beschriftungsschild
Parking for setting master
Standard without inscription label



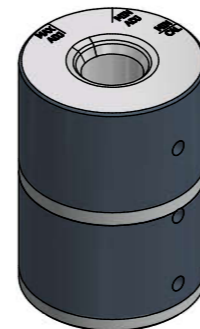
AT1341
Kalibrier- & Einstellehre
calibrate- & spread-master
(Min-Auslegung mit Einstellstufe)
(MIN with setting-levels)



AT1341
Einstellmeister Systemkontrolle
settingmaster system-control
(Max-Auslegung)
(MAX)



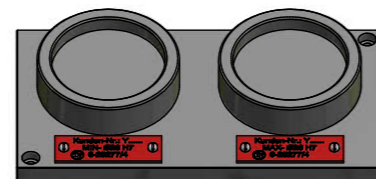
AT1343
Kalibrier- & Spreizlehre
calibrate- & spread-master
(MIN-Auslage mit Einstellstufe)
(MIN with setting-level)



AT1343
Einstellmeister Systemkontrolle
settingmaster system-control
(MAX-Auslage)
(MAX)



AT1306.AB2
Standard mit Beschriftungsschild
Parking for setting master
Standard with inscription label



AT1306.AB2
Standard mit Beschriftungsschild
Parking for setting master
Standard with inscription label

